

## Marine and Freshwater Research Institute - Iceland – highlights 2016 – 2017

Marine Research Institute (MRI) and Institute of Freshwater Fisheries (IFF) merged on July 1st, 2016. MRI with 160 personnel and IFF with 20 – in total 180 personnel.

New name – new logo – new director – and a lot of work

### Research Vessels:

Árni Friðriksson, RE 200

Build in 2000.



Bjarni Sæmundsson, RE 30

Build in 1970



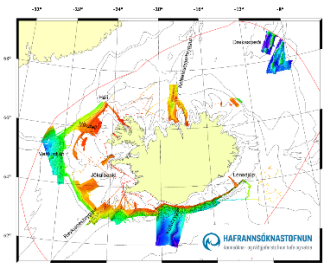
### International cooperation.

Red fish survey for Norway – lease Árni F.

Greenland halibut and red fish survey for Norway in August 2017 – lease Árni F.

### New equipment on Árni Friðriksson

On MRI 50th Anniversary in 2015 the government decided (by advice from MRI) to give the nation a „birthday present“; to finish mapping the seabed in the Icelandic EEZ. In 2016 the institute got a special funding for replacement of multibeam as well as subbottom profiler. Tendering process resulted in purchase of Kongsberg Simrad EM302 instead of EM300 (since 2000) and Topas PS18 subbottom profiler. Also the institute got a special funding for operating for about 60 days a year for mapping. In total it will take about 12 years to finish the mapping as only less than 10 % has been mapped from 2001 to 2016.



Mapping in July 2017

